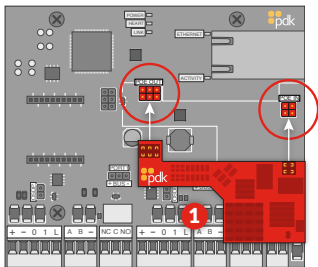


*Red 2 Board



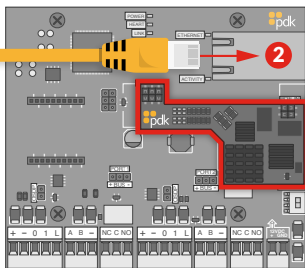
1 Plug the Red PoE module into the Red board as shown in the image.

Ensure that the PoE module aligns with the dedicated PoE pins on the Red board. Gently and carefully press the module onto the board.



PoE+switch

*Red 2 Board



2 Connect the Red board to a PoE switch by plugging an Ethernet connection into the network port on the Red board.

Available power is dependent on the switch being used.

View available power in the table below.

Product	PoE Switch	PoE+ Switch	PoE++ Switch
Red 1	11 Watts delivers 0.8 Amps	24 Watts delivers 1.7 Amps	27 Watts delivers 2 Amps
Red 2	11 Watts delivers 0.8 Amps	24 Watts delivers 1.7 Amps	27 Watts delivers 2 Amps
Red 4	11 Watts delivers 0.8 Amps	24 Watts delivers 1.7 Amps	49 Watts delivers 3.5 Amps

Have questions or need support?

801.317.8802 option #2 or support@prodatakey.com