

“PRODUCTS HIGHLIGHTS”



Plug&Play

Simplifies installation



Cloud Upgrade

One-click upgrade over cloud



Long-range POE

Up to 820fts long range POE



Maglev Fan

Reduce vibration and noise caused by mechanical friction. More reliable



RAID

Non-stop maintenance and automatic repair



Abundant Interface

Easy to deploy and maintain, saving cost and providing peace of mind

ENHANCED INTELLIGENT

SIP/LPR/POS/NAS

People counting/Compatibility/Fisheye dewarping

SIP (Smart intrusion prevention)

Accurate defence, efficient retrieval

- Intelligent mark: target and rule line
- Snapshot shown on liveview interface
- Quick search by different alarm/object types



LPR (License plate recognition)

Accurate recognition, convenient management

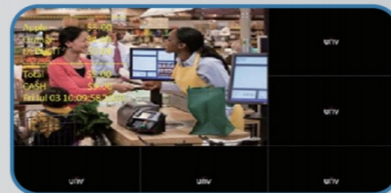
- Snapshot and attributes shown on liveview interface
- Retrieve by conditions (plate number, vehicle color, plate color)
- Arming for two alarm types, match and non-match



POS

Combine transaction and surveillance

- POS data overlay for liveview and playback video
- Records can be retrieved according to POS Key words
- POS function can only work on GUI



People counting

Video and counting boost business

- Real-time counting shown as OSD on liveview interface
- Statistic display and export



UNV

NVR302-E2-P SERIES-E2



NVR516 SERIES-PRO



NVR304-X SERIES-X



UNV

1 SATA



NVR301-04LS3-P4

- Video input: 4-ch
- PoE: 4 x PoE+
- Decoding Capability: 1*4k, 4*1080P
- Incoming bandwidth: 64Mbps
- HDMI/VGA: 1/1



NVR301-04S3-P4



NVR301-08LS3-P8

- Video input: 8-ch
- PoE: 8 x PoE+
- Decoding Capability: 1*4k, 4*1080P
- Incoming bandwidth: 64Mbps
- HDMI/VGA: 1/1



NVR301-08S3-P8



NVR301-04LX-P4

- Video input: 4-ch
- PoE: 4 x PoE+
- Decoding Capability: 2*4k, 8*1080P
- Incoming bandwidth: 80Mbps
- HDMI/VGA: 1/1
- SIP



NVR301-04X-P4



NVR301-08LX-P4

- Video input: 8-ch
- PoE: 8 x PoE+
- Decoding Capability: 2*4k, 8*1080P
- Incoming bandwidth: 80Mbps
- HDMI/VGA: 1/1
- SIP



NVR301-08X-P8

2 SATA



NVR302-09S2
NVR302-16S2
NVR302-32S

- Video input: 9-ch/16-ch/32-ch
- Network Interface: 2 x RJ45
- Decoding Capability: 2*4k, 8*1080P
- Incoming bandwidth: 160Mbps
- HDMI/VGA: 1/1
- SIP



NVR302-08S2-P8
NVR302-16S2-P16

- Video input: 8-ch/16-ch
- PoE: 8 x PoE+/ 16 x PoE+
- Decoding Capability: 2*4k, 8*1080P
- Incoming bandwidth: 160Mbps
- HDMI/VGA: 1/1
- SIP



NVR302-09E2
NVR302-16E2
NVR302-32E2

- Video input: 9-ch/16-ch/32-ch
- Network Interface: 2 x RJ45
- Decoding Capability: 2*4k, 10*1080P
- Incoming bandwidth: 320Mbps
- HDMI/VGA: 1/1 (Independent outputs)
- SIP/LPR/People Counting/POS



NVR302-8E2-P8
NVR302-16E2-P16

- Video input: 8-ch/16-ch
- PoE: 8 x PoE+/ 16 x PoE+
- Decoding Capability: 2*4k, 10*1080P
- Incoming bandwidth: 320Mbps
- HDMI/VGA: 2/1 (Independent outputs)
- SIP/LPR/People Counting/POS

4 SATA



NVR304-16S
NVR304-16S-P16

- Video input: 16-ch/32-ch
- Decoding Capability: 2*4k, 8*1080P
- Incoming bandwidth: 160Mbps
- HDMI/VGA: 1/1
- SIP



NVR304-32S
NVR304-32S-P16



NVR304-16E2
NVR304-16E2-P16

- Video input: 16-ch/ 32-ch
- Decoding Capability: 2*4k, 10*1080P
- Incoming bandwidth: 320Mbps
- HDMI/VGA: 1/1 (Independent outputs)
- SIP/LPR/People Counting/POS



NVR304-32E2
NVR304-32E2-P16



NVR304-16X
NVR304-32X

- Video input: 16-ch/ 32-ch
- Network Interface: 2 x RJ45
- Decoding Capability: 4*4k, 16*1080P
- Incoming bandwidth: 384Mbps
- HDMI/VGA: 2/1 (Independent outputs)
- SIP/LPR/People Counting
- RAID 1/5

8 SATA



NVR308-16X
NVR308-32X
NVR308-64X

- Video input: 16-ch/ 32-ch/ 64-ch
- Network Interface: 2 x RJ45
- Decoding Capability: 4*4k, 16*1080P
- Incoming bandwidth: 384Mbps
- HDMI/VGA: 2/1 (Independent outputs)
- SIP/LPR/People Counting
- RAID 0/1/5/6/10

16 SATA



NVR516-64
NVR516-128

- Video input: 64-ch/ 128-ch
- Network Interface: 4 x RJ45, 2 x RJ45 SFP
- 384Mbps/512Mbps input bandwidth
- Decoding Capability: 4*4k, 16*1080P
- HDMI/VGA: 2/1 (Independent outputs)
- 7 RAID modes
- Redundancy guarantee: Dual BIOS, Dual power
- Hot spare
- HDD supports hot swap
- 2 miniSAS ports, up to 48 HDD (with disk enclosure)
- Alarm I/O: 24/8
- SIP/LPR/People Counting

24 SATA



NVR824-128
NVR824-256

- Video input: 128-ch/ 256-ch
- Network Interface: 4 x RJ45
- Up to 768Mbps input bandwidth
- Decoding Capability: 5*4k, 20*1080P
- HDMI/VGA: 2/1 (Independent outputs)
- 7 RAID modes
- Redundancy guarantee: Dual BIOS, Dual power
- Hot spare
- HDD supports hot swap
- 2 miniSAS ports, up to 56 HDD (with disk enclosure)
- Alarm I/O: 24/8
- SIP/LPR/People Counting