

Quick Setup

Get the Alula App

Power Kit Installation

Doorbell Installation

Doorbell Setup



Doorbell (x1)



Mounting Plate (x2)
Pick the one for best surveillance angle.



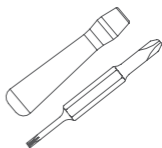
Plate Foam (x1)
Stabilize the mounting plate when installing it on the rough surface.



Power Kit (x1)



Drill Bit (x1)



Screwdriver (x1)



Mounting Screw (x3)



Anchor (x3)



Wire Connector (x4)



Security Screw (x1)



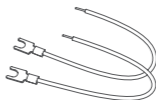
Fixing Screw (x2)



Wire Harness (x1)

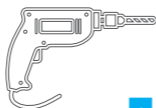


Fuse Wire (x1)



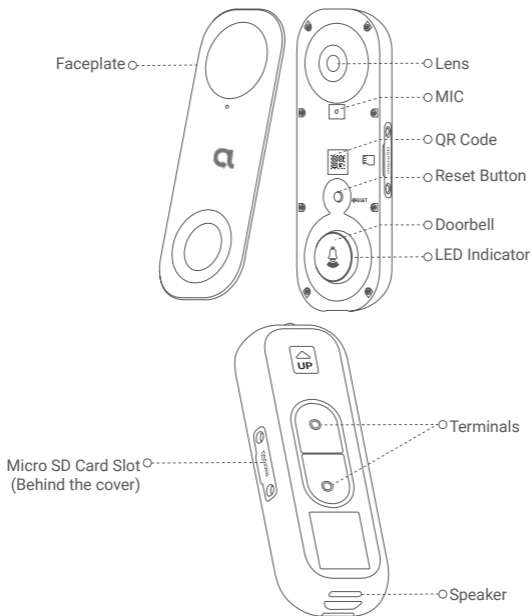
U-shaped Wire (x2)

Tools You May Need



Drill (x1)

Basics



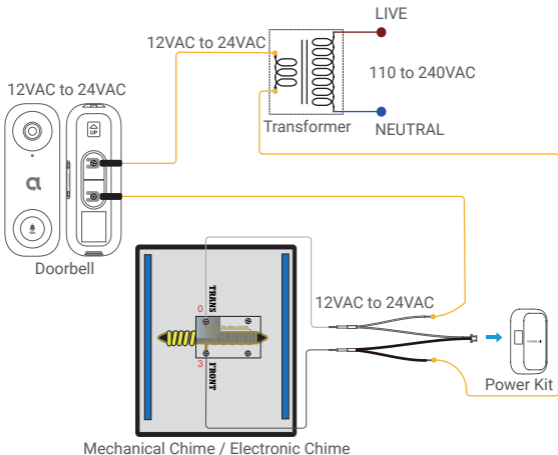
Name	Description
LED Indicator	<p>Red</p> <ul style="list-style-type: none">• Solid Red: Doorbell is starting up.• Fast-flashing Red: Doorbell exception (e.g. Micro SD card error). <p>Blue</p> <ul style="list-style-type: none">• Solid Blue: Doorbell is functioning properly.• Fast-flashing Blue: Doorbell is ready for Wi-Fi connection.
Micro SD Card (sold separately)	Initialize the card in the Alula app before using it.
Reset Button	Hold for 5 seconds to reset and enter to Wi-Fi configuration mode.

Get the Alula App

1. Connect your mobile phone to Wi-Fi (suggested).
2. Search for "Alula" in App Store or Google Play™.
3. Download and install the Alula app.
4. Launch the app, and sign into user account.

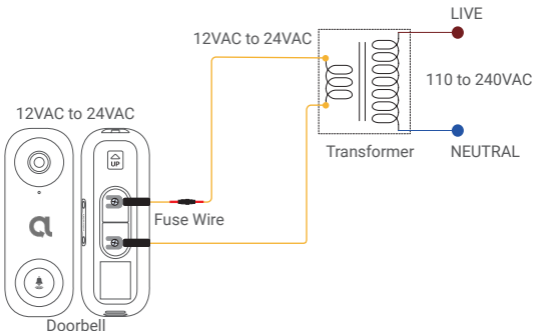
Alula doorbell with chime

- If you have mechanical chime or electronic chime installed in your home, install the power kit and doorbell, and connect the wires as shown in the figure below.



Alula doorbell with no chime

- If no chime is installed, skip power kit installation, install the doorbell, and connect the wires as shown in the figure below.

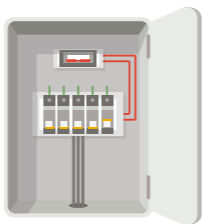


- We recommend installing a new transformer to bring the output 12 to 24 volts.
- Please refer to Quick Start Guide of your chime or transformer for the chime or transformer installing details.

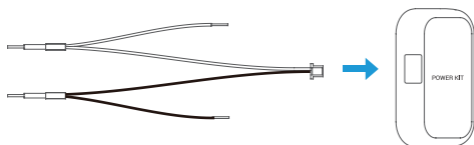
Power Kit Installation

i The power kit ensures that your doorbell gets the power it needs, so be sure to install it before you install your Doorbell.

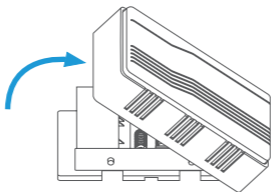
1 Shut off the electricity at the breaker that controls doorbell's circuit.



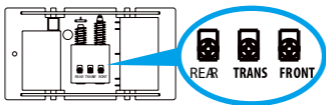
2 Insert one end of the wire harness into the power kit.



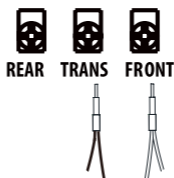
3 Remove the cover from your mechanical chime.



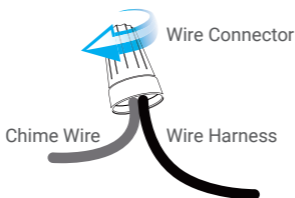
4 Remove the existing chime wires in the terminals named TRANS and FRONT.



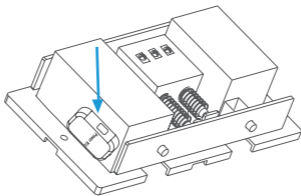
- 5 Connect the wire harness to the chime's terminals named TRANS and FRONT.



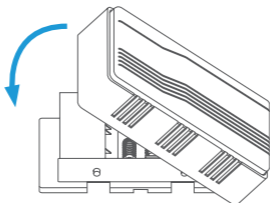
- 6 Insert the existing chime wire and the other end of the wire harness into the wire connector and twist it tightly. Repeat this step with the other chime wire.



- 7 Mount the power kit to the side of the chime.



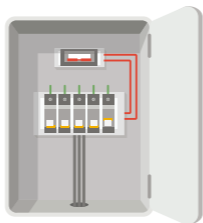
- 8 Put back the chime cover.



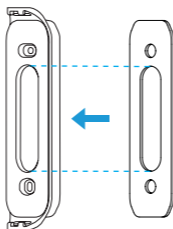
Doorbell Installation

i Recommended Installation Height: 1.2 m (4 ft) above the ground.

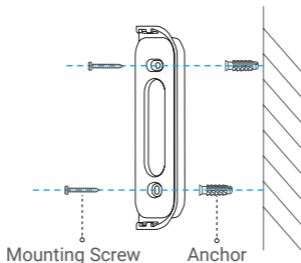
1 Shut off the electricity at the breaker that controls doorbell's circuit.



2 (Optional) When the wall is uneven, paste the plate foam to the mounting plate.



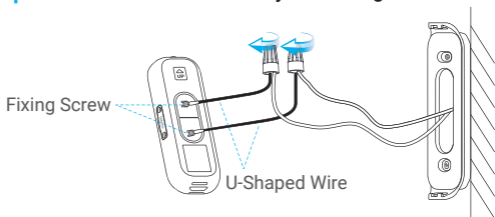
3 Using your mounting plate as a template, mark the location of the two mounting holes on your wall, and insert anchors, then fix the mounting plate to the wall.



i Recommended Hole Depth: 25 to 30 mm (1 inch to 1.2 inch).

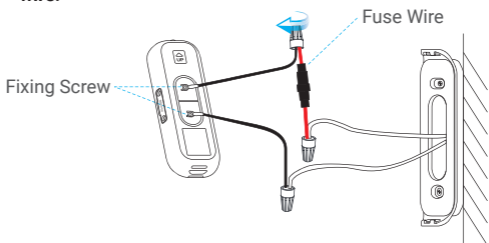
- 4 If you have a chime installed, follow **Option A**;
If not, follow **Option B**.

Option A Connect doorbell with your existing doorbell wires.



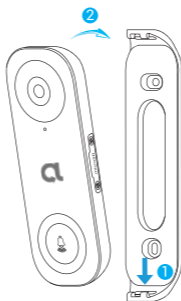
Power Supply: 12 to 24 VAC

Option B Connect the fuse wire with your existing doorbell wire.



Power Supply: 12 to 24 VAC

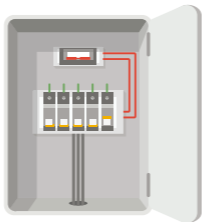
- 5 Install the doorbell to the mounting plate.



- 6 Insert the security screw into the top of the mounting plate to secure the doorbell.



- 7 Restore the electricity at the breaker.

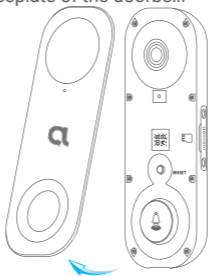


- i** Doorbell is powered on when its indicator flashes blue quickly. If not, make sure your electricity is off and check the wiring. If yes, proceed to doorbell setup.

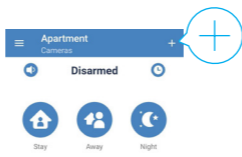
Doorbell Setup

- 1 Add your doorbell to Alula app.

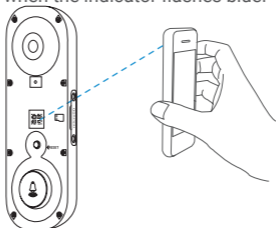
1. Remove the faceplate of the doorbell.



2. Log in to your Alula account.
3. In the Cameras tab, tap “+” on the upper-right corner to go to the Scan QR Code interface.



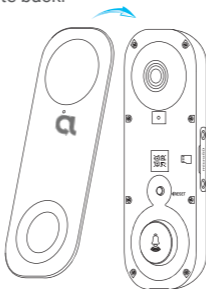
4. Scan the QR code on the device or the cover of this quick start guide when the indicator flashes blue.



5. Follow the wizard to add the doorbell to the Alula app.

- i** If you want to change the Wi-Fi which your doorbell has connected to, press and hold the reset button for 5s and repeat this part.

6. Put the faceplate back.

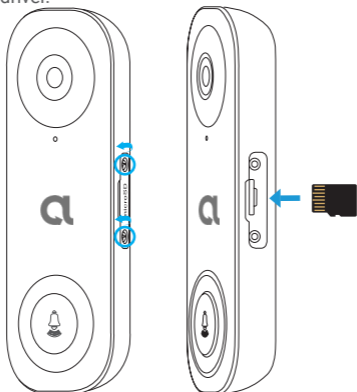


2 Choose the corresponding chime type.

1. In the Alula app, tap the **Chime Type** in the Device Settings interface to go to the Chime Type interface.
2. Choose the chime type which you have installed in your home.

Install the Micro SD Card

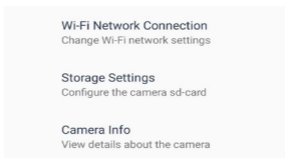
1. Remove the cover on the side of the doorbell with the screwdriver.
2. Insert a micro SD card (sold separately) into the slot until a click.
3. Place the cover back on, and tighten the screws with the screwdriver.



- i** After installing the micro SD card, you should initialize the card in the Alula app before using it.

Initialize Micro SD Card

1. In the Alula app, tap the **Storage Settings** in the Device Settings interface to check the micro SD card status.



2. If the card status displays as **Uninitialized**, tap to initialize it.
3. The status will then change to **Normal** and it can store videos.

1 I have installed my doorbell, but the chime in my home doesn't function.

Please confirm the following details.

1. Make sure the right input voltage range (12V to 24V) has been used. Your doorbell is designed to work with at least 12 volts of AC power, which is in line with a majority of standard doorbell systems. Doorbell running at a lower voltage (or runs on DC rather than AC) may cause chime malfunction.
2. Select the right chime type (same as the product label) in the Alula app.
3. Power on the doorbell and wait for 10 minutes to 3 hours, and then try again.

2 I have failed to connect my doorbell to Wi-Fi.

1. Make sure your doorbell is not blocked by firewall or any limitation in your network.
2. Do not connect too many devices to the router.
3. Make sure the static IP setting is disabled and the router can distribute IP address to your device (DHCP is on).

3 My doorbell is offline frequently.

1. Make sure the doorbell has received strong and stable Wi-Fi signal.
2. Make sure your router and the internet is functional.
3. The doorbell requires at least 2 Mbps uploading speed, please make sure the bandwidth of the network is sufficient, and do not have too many devices connected to the router.
4. If all the troubleshooting techniques listed above does not resolve the problem, please delete the device from your Alula account, reset and re-add.