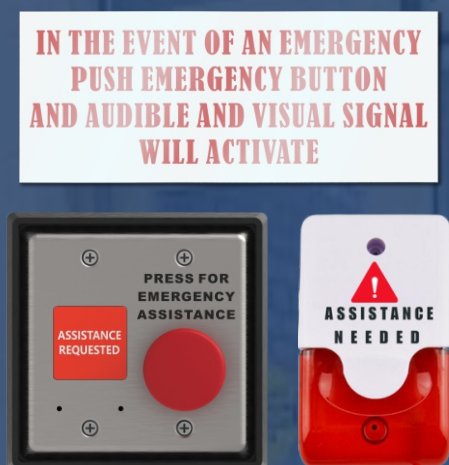


WR-EB-KIT

Restroom Emergency Assistance Kit



The MZE Restroom Emergency Assistance Kit provides a complete, code-compliant emergency call system for accessible and universal washrooms.

It combines reliable performance, intuitive operation, and high visibility to ensure fast response when assistance is needed.

Each kit includes an Emergency Mushroom Push Button, an Audible & Visual Alarm Light, and an Emergency Instruction Sign, providing a clear and effective means of alerting building staff or attendants during an emergency.

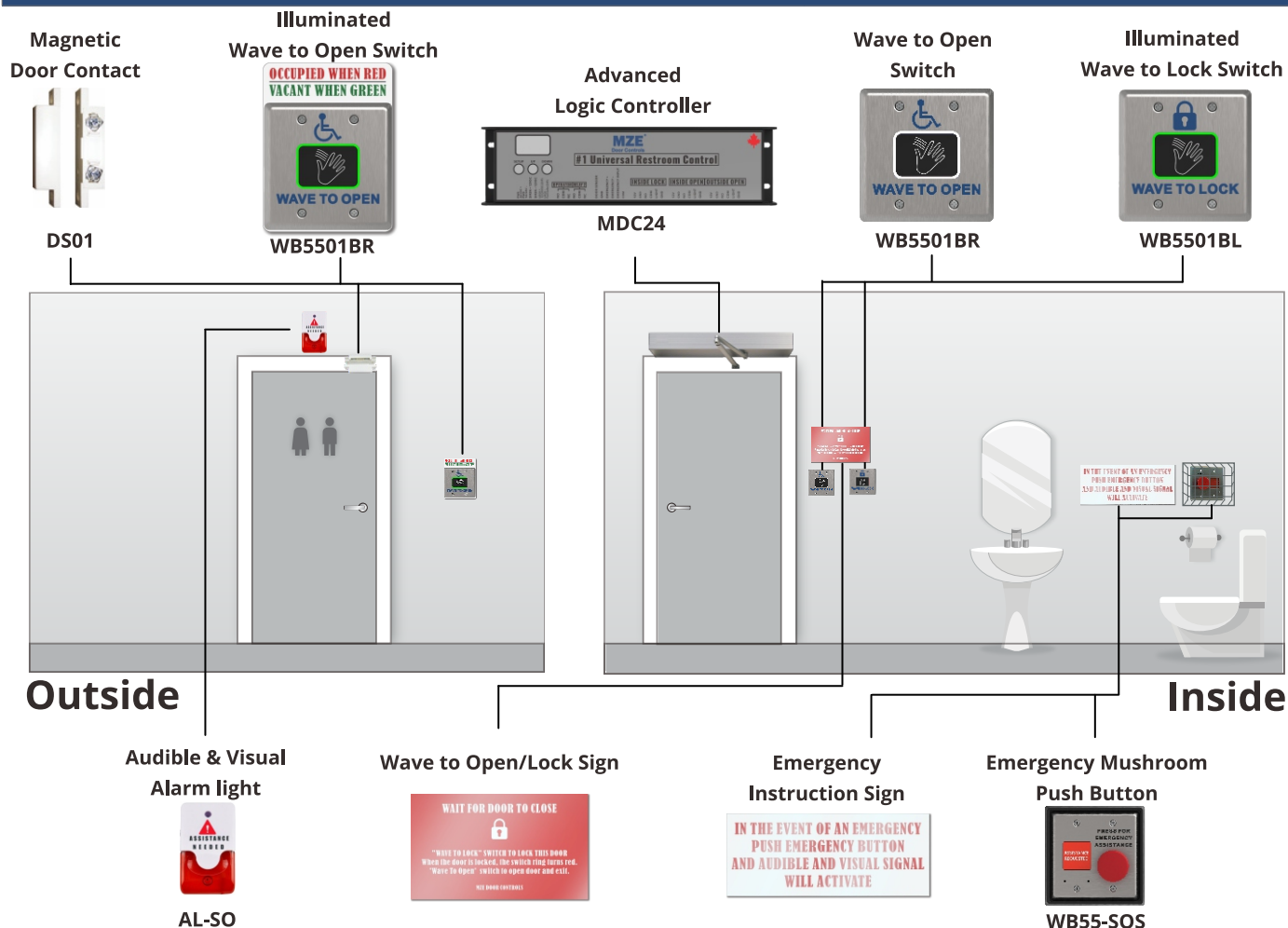
The Audible & Visual Alarm light offering clear visual and audible indication inside and outside the restroom.

Features

- Designed for universal and barrier-free washrooms, compatible with or without automatic door systems
- Provides visual and audible alerts both inside and outside the restroom, with adjustable sound level
- Emergency Mushroom Push Button available in maintained types, with large, easy-to-press actuator
- Audible & Visual Alarm Light built-in sounder and flashing indicator
- Emergency Instruction Sign provides clear guidance in English
- Fully compatible with all MZE barrier-free restroom control systems
- 3-year warranty



UNIVERSAL RESTROOM DIAGRAM



PARTS AND ACCESSORIES INCLUDED

Audible & Visual Alarm Light

- Selectable steady/flash visual indicator
- Fits 2x4 box or wall mount
- Simple 2-wire non-polarized BUS connection



AL-SO

Emergency Instruction Sign

- English
- Solid White Sign
- 150 X 270 mm



Emergency Mushroom Push Button

- Push/Pull Mushroom Push Button
- Red, 'Assistance Required'
- LED Annunciator and Adjustable Sounder



WB55-SOS

