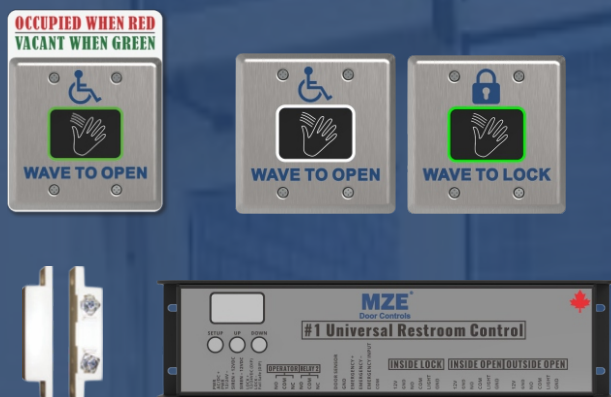


WR-WAVE-KIT1

Restroom Touch-Free Switch Control Kit



The MZE Restroom Touch-Free Switch Control Kit offers a modern and hygienic solution for automatic door operation in universal and barrier-free washrooms.

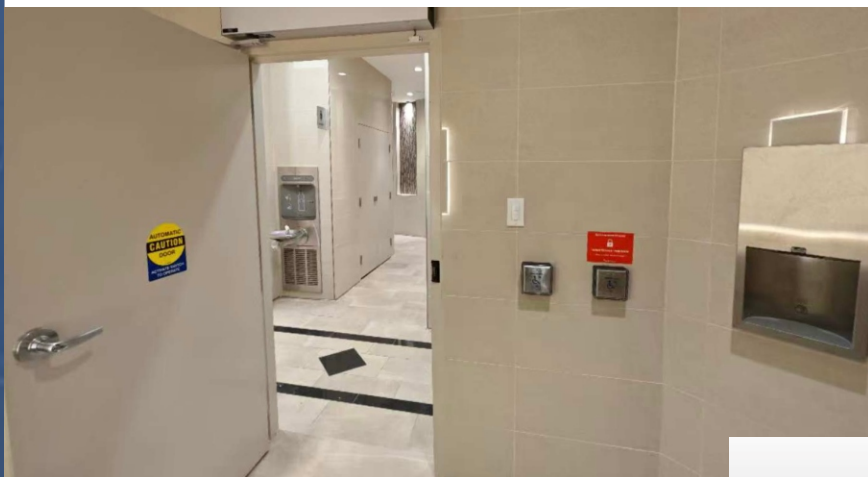
Each system integrates intelligent logic control, LED-illuminated status indication, and hands-free activation to ensure safety, convenience, and code compliance in public and commercial facilities.

The kit includes all essential components for a complete installation — from the Wave to Open Switch and Illuminated Wave to Lock Switch to the Magnetic Door Contact, Wave to Open/Lock Status Sign, and Advanced Logic Controller.

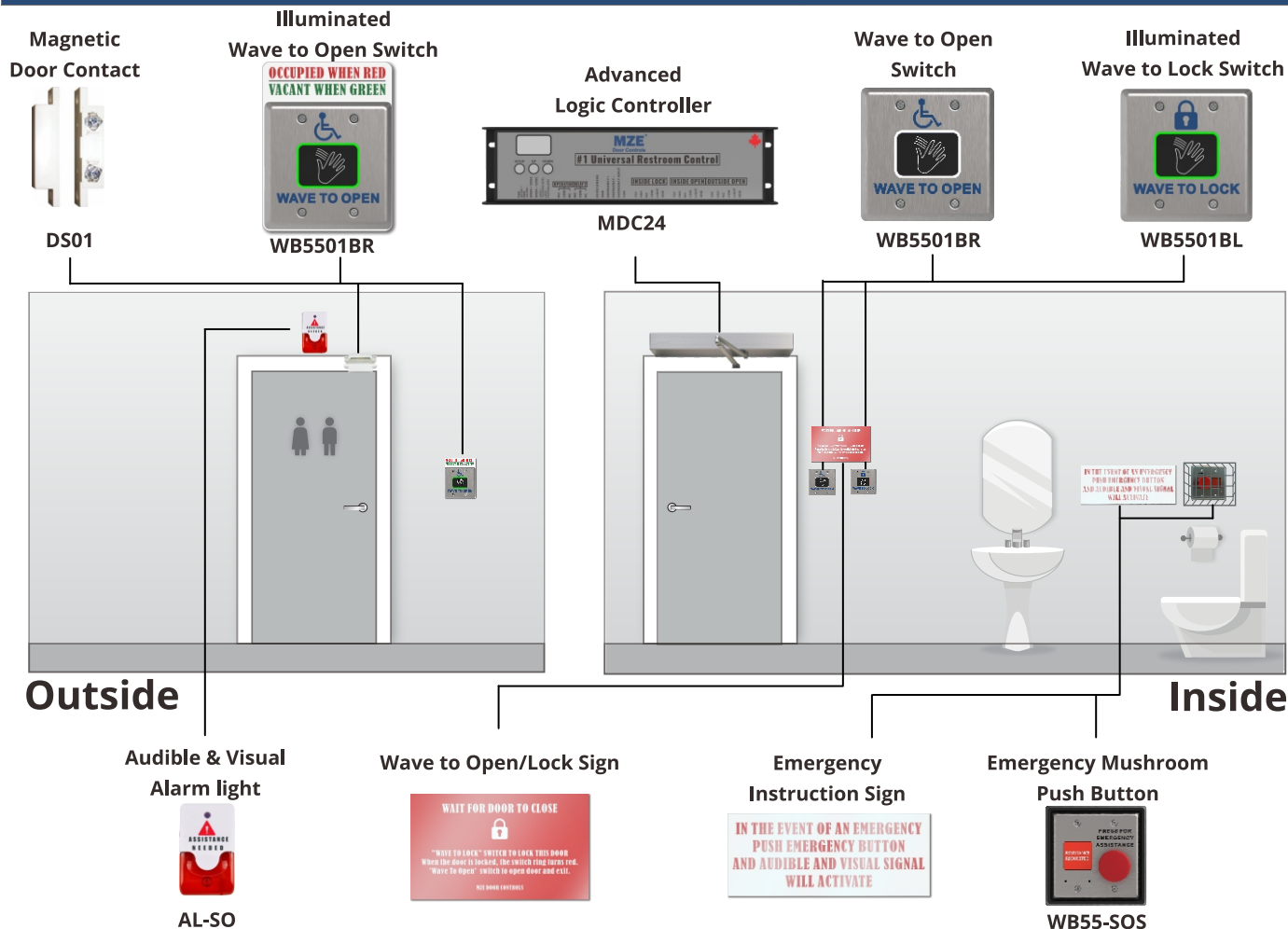
This system enables seamless door operation and real-time status feedback, providing both visual and audible indication for occupied and vacant conditions.

Features

- Designed for touch-free door activation in universal and barrier-free washrooms
- Includes all required components: advanced logic controller, touch-free switches, magnetic door contact, and illuminated status signage
- Wave to Open Switch and Illuminated Wave to Lock Switch provide hygienic, non-contact operation with clear LED feedback (Occupied/Vacant)
- Illuminated signage enhances accessibility and user visibility
- Fully compatible with MZE emergency assistance kits
- Intuitive wiring design for quick installation and reliable long-term performance
- 3-year warranty



UNIVERSAL RESTROOM DIAGRAM



PARTS AND ACCESSORIES INCLUDED

Wave to Open Switch

- Active Infrared
- Detection Range 3 – 26" (Adjustable)
- Double Gang with Occupied/Vacant Label



Wave to Open Switch

- Active Infrared
- Detection Range 3 – 26" (Adjustable)
- 12/24V DC $\pm 12\%$



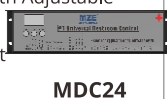
Wave to Lock Switch

- Active Infrared
- Detection Range 3 – 26" (Adjustable)
- 12/24V DC $\pm 12\%$



Advanced Logic Controller

- Different Operating Modes, With Adjustable Timers On Each Relay
- 5 Inputs, Including A 'wet' Input
- 3 Buttons for Mode Selection



Magnetic Door Contact

- Surface
- SPST Contact
- 15/16" (23mm) Gap

